



DIGITAL *SOLUTIONS*

PROFESSIONAL AUDIO VISUAL
SYSTEMS PRODUCER



ABOUT US

We are a digital solutions provider and system integrator with multidisciplinary experiences. Over the past 15 years, we have worked with various partners and clients from conceptualization to planning, design, and implementation stages.

With a proven track record, we have completed over 500 projects covering a wide variety of applications from display and audio solutions, training and simulations, automation and control, digital signage, streaming and recording, interactive system design and consultation, and projection-mapping to custom projects.

Pro AV
SYSTEM
INTEGRATOR

COMPLETED
500+
PROJECTS

EXPERIENCE
since
2008

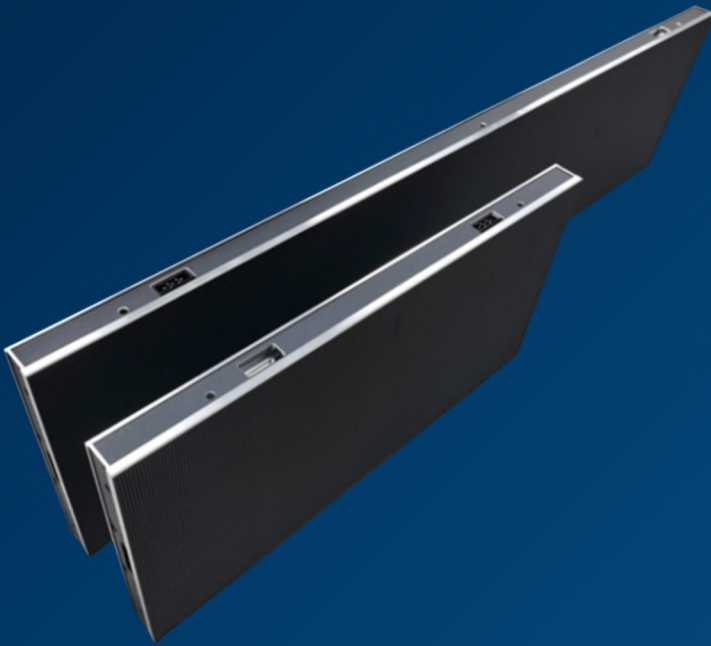
TRUSTED ACROSS
APAC
REGION

CERTIFIED
bizSAFE

STATE-OF-THE-ART
LED
MANUFACTURER

Digital Solutions Indoor LED

INDOOR IB SERIES



- Thickness: 33mm
- Weight: 5.8kg/2.9kg
- Easy full front access maintenance
- Wireless connection, more stable
- High contrast

- Aluminum material frame
- High precision, high strength
- Perfect heat dissipation



Digital Solutions Indoor LED

INDOOR IB SERIES



FEATURES

- Front Access Maintenance
- Parts & Modules can be taken out from Front
- Due to the design, can be used in Creative installation requirements
- Installation is Fast Simple and convenient
- Mounting: Stacked mounted or hanging Installation
- Size: 500 x 1000mm
- Customisable to suit different requirement

APPLICATIONS

- Corporate Boardrooms
- Museums
- Showrooms
- Retail Malls
- Banks and Financial
- Command Centre
- Hotels and Conferences
- Government and Public Sectors
- School and Universities

** Specifications subjected to changes without prior notice

Digital Solutions Indoor LED

IB SERIES SPECIFICATION

| Pixel Pitch | IB-1.5625S | IB-1.95S | IB-2.5S | IB-2.604S | IB-2.976S | IB-3.91S |
|-----------------------------|----------------------------------|---------------------------------|---------------------------------|--------------------------|--------------------------|--------------------------|
| LED Type | SMD1212(GOB) | SMD1515 | | | | |
| Physical Density (dots/m2) | 409600 | 262144 | 160000 | 147456 | 112896 | 65536 |
| Module Resolution | 160 x 160 | 128 x 128 | 100 x 100 | 96 x 96 | 84 x 84 | 64 x 64 |
| Module Size (mm) | 250 x 250 | | | | | |
| Cabinet Size (mm) | 500/750/1000 x 250 x 33 | | | | | |
| Module QTY/Cabinet (WxH) | 4x1/3x1/2x1 | | | | | |
| Panel Resolution | 640x160/ 480x160/320x1 60 | 512x128/384 x128/256x12 8 | 400x100/30 0x100/200x 100 | 384x96/288 x96/192x96 | 336x84/252 x84/168x84 | 256x64/192 x64/128x64 |
| Maintenance Mode | Front | | | | | |
| Cabinet Material | Aluminum | | | | | |
| LED Brightness Correction | Yes | | | | | |
| Brightness (Nits) | 600 | 800 | | | | 1000 |
| Color Temperature (K) | 3200-9300 Adjustable | | | | | |
| Grey Level (Bit) | 14/16 Optional | | | | | |
| Viewing Angle (H/V) | 160°/160° | | | | | |
| Brightness/Color Uniformity | ≥97% | | | | | |
| Contrast Ratio | 10000:1 | | | | | |
| Frame Frequency | 50/60 | | | | | |
| Drive Mode | 1/40 Scan | 1/32 Scan | 1/25 Scan | 1/32 Scan | 1/28 Scan | 1/16 Scan |
| Refresh Rate | 3840 | | | | | |
| Max. Power Consumption | 650 | | | | | |
| Avg. Power Consumption | 100-200 | | | | | |
| IP Grade | IP 31 | | | | | |
| Input Power | AC90-264V 47-63Hz | | | | | |
| Working Temperature | -20~60°C/10%~85% | | | | | |
| Storage Temperature | -20~60°C/10%~85% | | | | | |
| Certification | CCC/CE/ROHS/FCC/CB/TUV/IEC | | | | | |

** Specifications subjected to changes without prior notice

DS2

All-in-One Video Processor

SPECIFICATIONS

Front Panel



| No. | Name | Function |
|-----|----------------|--|
| 1 | LCD | Display operation menu and system information |
| 2 | Knob | Turning knob to select or adjust |
| 3 | Function Keys | <ul style="list-style-type: none">• OK: Enter key• ESC: Escape current operation or selection• BRIGHT: Brightness option• BLACK: Black screen• PART: Crop screen |
| 4 | Selection Keys | DVI 1/ DVI 2/ HDMI: Video source selection |
| 5 | Power Switch | Power switching |

DS2

All-in-One Video Processor

SPECIFICATIONS

Back Panel



Input Interface

| | | |
|---|-------|--|
| 1 | DVI | 2 DVI Inputs HDMI 1.4 standard, supports 1920 x 1200@60Hz |
| 2 | HDMI | HDMI Input HDMI 1.4 standard, supports 1920 x 1200@60Hz |
| 3 | AUDIO | Audio Input Input audio signal and transmit to the malfunction card |

Output Interface

| | | |
|---|----------|----------------------------------|
| 1 | Port 1-2 | RJ45, 2 Gigabit Ethernet outputs |
|---|----------|----------------------------------|

Controlling Interface

| | | |
|---|---------|--|
| 1 | USB IN | USB input, which connects with PC to configure |
| 2 | USB OUT | USB output, cascading with the next controller |

Power

| | | |
|---|-------------|--------------------|
| 1 | AC 100~240V | AC Power interface |
|---|-------------|--------------------|

DS2

All-in-One Video Processor

SPECIFICATIONS

| | Model | DS2 |
|---------------------------|---------------|--|
| | Size | 1U |
| Electrical Specifications | Input Voltage | AC100~240V, 50/60Hz |
| | Power | 10W |
| Operating Environment | Temperature | -20°C~60°C/-4°F ~ 140°F |
| | Humidity | 0%RH~80%RH, non-condensing |
| Storage Environment | Temperature | -30°C~80°C/-22°F ~ 176°F |
| | Humidity | 0%RH~90%RH, non-condensing |
| Device Specifications | Dimensions | W x H x L/482.6mm x 44.0mm x 262mm3/19" x 1.7" x 10.3" |
| | Net Weight | 2kg/4.4lbs |
| Packing Specifications | Dimensions | W x H x L/523x95x340mm 3/20.6" x3.7" x 13.4" |
| | Net Weight | 0.7kg/1.54lbs |

DS4

All-in-One Video Processor

SPECIFICATIONS

Front Panel



| No. | Name | Function |
|-----|----------------|--|
| 1 | LCD | Display operation menu and system information |
| 2 | Knob | Turning knob to select or adjust |
| 3 | Function Keys | <ul style="list-style-type: none">• OK: Enter key• ESC: Escape current operation or selection• BRIGHT: Brightness option• BLACK: Black screen• PART: Crop screen |
| 4 | Selection Keys | DVI 1/ DVI 2/ HDMI: Video source selection |
| 5 | Power Switch | Power switching |

DS4

All-in-One Video Processor

SPECIFICATIONS

Back Panel



Input Interface

| | | |
|---|-------|--|
| 1 | DVI | 2 DVI Inputs HDMI 1.4 standard, supports 1920 x 1200@60Hz |
| 2 | HDMI | HDMI Input HDMI 1.4 standard, supports 1920 x 1200@60Hz |
| 3 | AUDIO | Audio Input Input audio signal and transmit to the malfunction card |

Output Interface

| | | |
|---|----------|----------------------------------|
| 1 | Port 1-4 | RJ45, 4 Gigabit Ethernet outputs |
|---|----------|----------------------------------|

Controlling Interface

| | | |
|---|---------|--|
| 1 | USB IN | USB input, which connects with PC to configure |
| 2 | USB OUT | USB output, cascading with the next controller |

Power

| | | |
|---|-------------|--------------------|
| 1 | AC 100~240V | AC Power interface |
|---|-------------|--------------------|

DS4

All-in-One Video Processor

SPECIFICATIONS

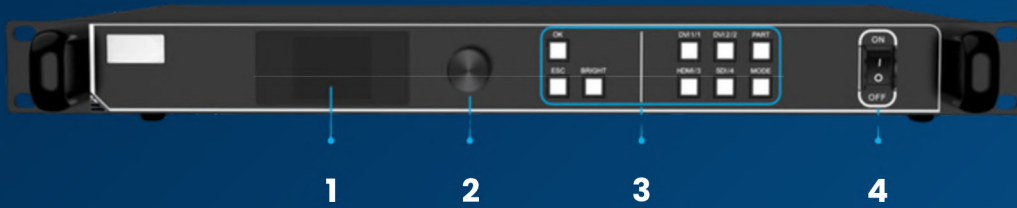
| | Model | DS4 |
|---------------------------|---------------|--|
| | Size | 1U |
| Electrical Specifications | Input Voltage | AC100~240V, 50/60Hz |
| | Power | 10W |
| Operating Environment | Temperature | -20°C~60°C/-4°F ~ 140°F |
| | Humidity | 0%RH~80%RH, non-condensing |
| Storage Environment | Temperature | -30°C~80°C/-22°F ~ 176°F |
| | Humidity | 0%RH~90%RH, non-condensing |
| Device Specifications | Dimensions | W x H x L/482.6mm x 44.0mm x 262mm 3/19" x 1.7" x 10.3" |
| | Net Weight | 2kg/4.4lbs |
| Packing Specifications | Dimensions | W x H x L/523x95x340mm 3/20.6" x 3.7" x 13.4" |
| | Net Weight | 0.7kg/1.54lbs |

DS6

All-in-One Video Processor

SPECIFICATIONS

Front Panel



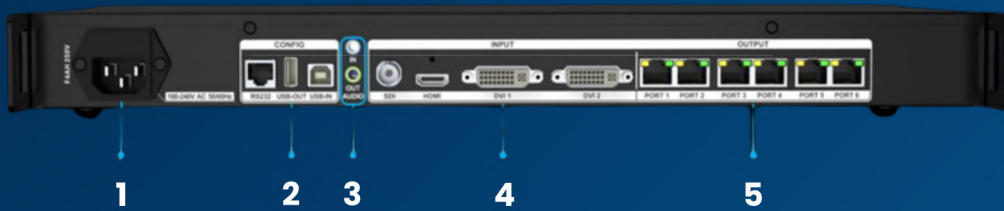
| No. | Name | Function |
|-----|----------------|--|
| 1 | LCD | Display operation menu and system information |
| 2 | Knob | Select an item or adjust the parameter, press the knob to confirm your selection or adjustment |
| 3 | Function Keys | <ul style="list-style-type: none">• OK: Confirm button• Bright: Tune brightness• ESC: Exit the current operation or back to previous menu• Part: Crop Screen• Mode: Select a preset• 1~4: Quick selection of preset |
| 4 | Selection Keys | DVI 1/ DVI 2/ HDMI/ SDI: Video source selection |
| 5 | Power Button | Switch On/Off |

DS6

All-in-One Video Processor

SPECIFICATIONS

Back Panel



Power

| | | |
|---|------------|--|
| 1 | MAIN INPUT | AC100-240V, 50/60Hz, connect to AC power supply, built-in fuse |
|---|------------|--|

Control

| | | |
|---|---------|--|
| | RS232 | *RJ11 port (6p6c), connect to third-party device |
| 2 | USB IN | USB port input, connect to a PC for debugging or cascading input |
| | USB OUT | USB port output, as cascading output |

Audio

| | | |
|---|-----------|---|
| 3 | AUDIO IN | <ul style="list-style-type: none"> Interface type: 3.5mm Receive audio signals from computers or other audio sources |
| | AUDIO OUT | <ul style="list-style-type: none"> Interface type: 3.5 mm Support HDMI audio decoding and output audio signals to devices such as active speakers |

Input

| | | |
|---|--------------|--|
| 4 | DVI 1, DVI 2 | 2X DVI input |
| | HDMI | 1X HDMI1.4 input |
| | SDI | 1X SDI input, support 3G-SDI standard and de-interlacing |

Output

| | | |
|---|----------|-----------------------------------|
| 5 | PORT 1-6 | RJ45, 6X 1G Ethernet ports output |
|---|----------|-----------------------------------|



DIGITAL SOLUTIONS

unlocking
possibilities



+65 6287 2943



www.digitalsolutionsasia.com



sales@digitalsolutionsasia.com



23 New Industrial Road, #03-06,
Solstice Business Centre,
Singapore 536209